

VOLVO

F 12 Globetrotter

with extra equipment also available for F 10, F 12 standard cab

(2.432)

A study of the long-distance transport market shows that the percentage of journeys carried out over very long distances, super-long distance trucking, is on the increase. Cabs which satisfy the very special requirements made by the drivers of this type of truck are therefore a necessity. The drivers find that waiting times are often long at frontier check-points, or while waiting at ferry terminals. By having access to a cab which due to its greater space, offers a better environment and can be equipped with the necessary equipment to enable both the driver and crew to eat and live in the cab for longer periods, much of the stress and discomfort otherwise experienced under such conditions can be avoided. The Volvo Globetrotter makes the driver much more independent of the outside environment on long trips.

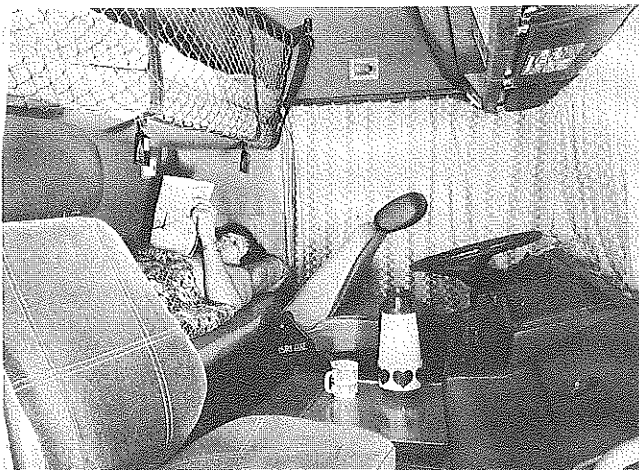
Exterior

The Globetrotter cab is 520 mm higher than the standard Volvo cab and has tinted glazing all round as standard. This reduces sun glare and keeps the cab cooler. The brow of the cab roof incorporates space for a company sign. The illumination of this sign is ready-wired. The cab features an automatic levelling device. Using compressed air, this device compensates the rearward lean of the cab caused by heavier equipment, acceleration forces, air resistance and the weight of luggage, etc.

Interior

Bunks: Headroom inside the cab is no less than 1970 mm. This means that it is possible for the driver to stand fully upright in the cab for example when changing clothes. As an alternative, the cab is available with two bunks, each bunk being fitted with a 100 mm thick mattress. The space between the bunks in this version is 650 mm. This satisfies the legislative requirements in force on all markets.

In the single-bunk version, the space otherwise taken up by the top bunk is replaced by a luggage shelf of net type with a safety net at the front. The safety net is also available as an optional extra on both single and twin bunk versions.



Storage space: Above the radio shelf there are three storage compartments with drop-down doors. Capacity: approx 3 x 50 litres.

The centre storage space below the bottom bunk has been enlarged from 550 mm to 590 mm, increasing its capacity to approximately 125 litres. This storage space is ideal for dry goods. Otherwise, oddments and luggage storage is the same as in the standard cab.

Comforts: The passenger seat can be swivelled through 180° which gives a larger standing area and facilitates entry to the bunks.

On the crew side of the cab, there is an adjustable footrest with three different positions. The angle of the footrest adjusts automatically to the feet.

An electrically powered door window lift is standard on the crew side.

Extra cab equipment, standard cab F 10/F 12

The following equipment, standard on the Globetrotter cab, is available as extras on the regular cabs:

- Levelling device (when a roof-mounted air deflector is fitted)
- Safety net in front of bunks
- Adjustable footrest on crew member side
- Tinted glazing

Extra equipment, F 12 Globetrotter and standard cab

- Speakers and aerial
- Cooker cabinet
- Refrigerator
- Roof-mounted air deflector (stand. cab)
- Three-point seat belts of inertia reel type.

F 12 Globetrotter

with extra equipment also available for F 10, F 12 standard cab

DESCRIPTION OF EXTRA EQUIPMENT

Speakers and aerial

A new type of speaker with an output of 20 watts is offered as an alternative to the standard 5 watts of the earlier type. This has significantly improved the sound reproduction. The new aerial is of fibreglass-reinforced plastic instead of the rubber type fitted previously.

Refrigerator

The refrigerator is mounted in the space beneath the bunk behind the crew member's seat. The Globetrotter cab and the standard single bunk cab can be specified with a 32 litre refrigerator. The two-bunk standard cab can be fitted with a 24 litre refrigerator.

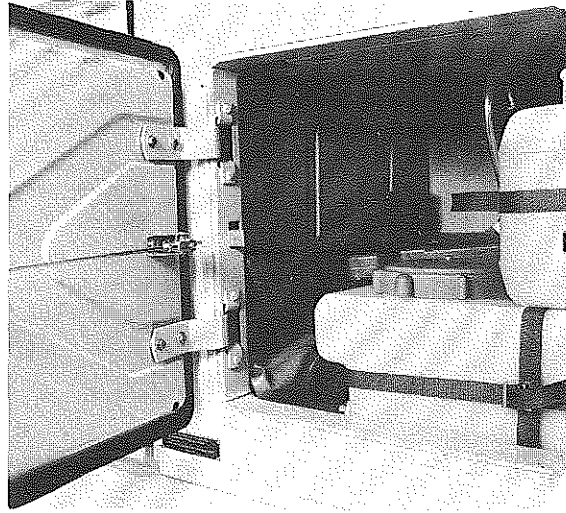
Cooker cabinet

A cooker cabinet which also serves as a table can be mounted on the engine casing. Completely equipped, this cabinet can be used to cook food in the cab. The cabinet includes a stainless steel sink with dimensions of 340 x 300 x 120 mm with running water for washing up and personal hygiene. A two-burner paraffin cooker (Optimus 155) is ideal for convenient and safe cooking (a paraffin type cooker much safer than natural gas fuelled types). The cabinet is also complete with two pans (1.17 litres and 2.16 litres) as well as a frying pan (diam. 200 mm, depth 45 mm).



Water tank

A water tank is installed in the storage space behind the driver. It has a capacity of 40 litres. If larger water capacity is required, the container can be mounted on the engine casing beneath the bunk. Topping the system up with water is very simple and is done from outside the cab. The integral water pump has a capacity of 8 l/min.



Strongbox

A fire-proof strongbox can be mounted in the storage space beneath the bottom bunk, above the engine casing. This strongbox can be used to store important documents, currency etc.

Roof-mounted air deflector

The roof rack anchorages in the cab roof have been reinforced in order to permit the mounting of an air deflector. The deflector improves the aerodynamic efficiency of rigs with a high superstructure. The air deflector is most efficient on articulated units which travel at high speeds with moderate loads. When a roof-mounted air deflector is fitted, the cab levelling device should be recommended.

12 R 22.5"
tyres:
unloaded 3829 mm 4390 mm

